

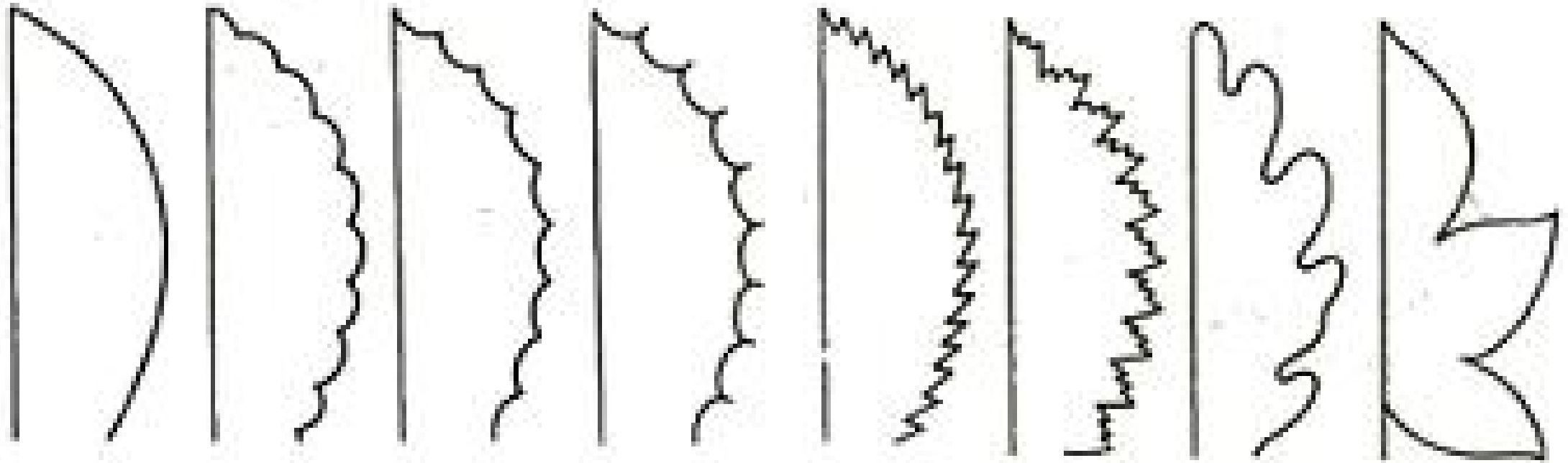
Morfologie = vormleer



Bladnervatuur

- Handnervig
- Veernervig

Bladranden en insnijdingen



gaaf

gekarteld

getand

stekelpuntig
getand

gezaagd

dubbel
gezaagd

geschulpt

gelobd



ovormig



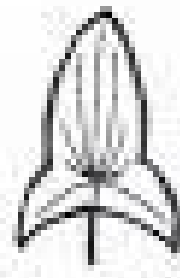
omgekeerd
ovormig



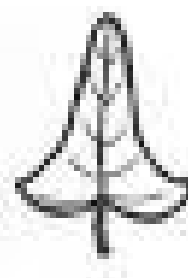
lancet-
vormig



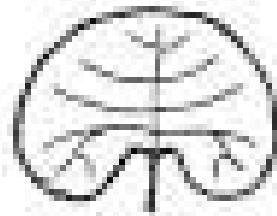
spatel-
vormig



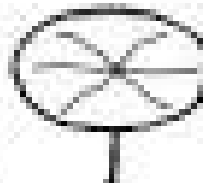
pijlvormig



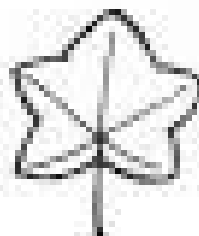
speervormig



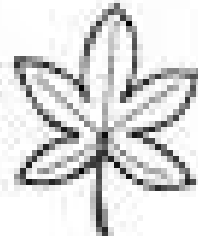
niervormig



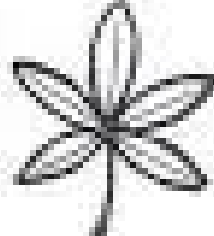
rond



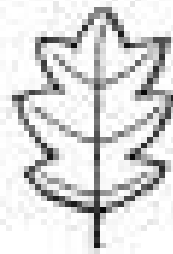
handvormig
gelobd



handvormig
ingesneden



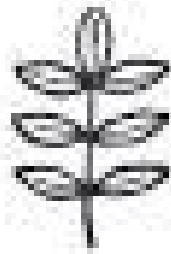
handvormig
gedeeld



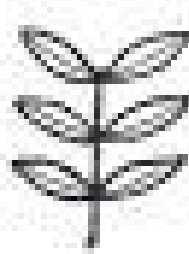
veerdelig
gelobd



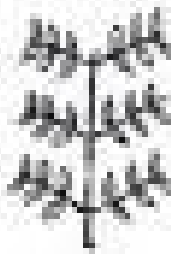
veerdelig
ingesneden



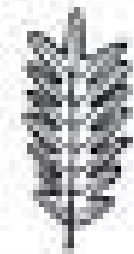
oneven
geveerd



even
geveerd

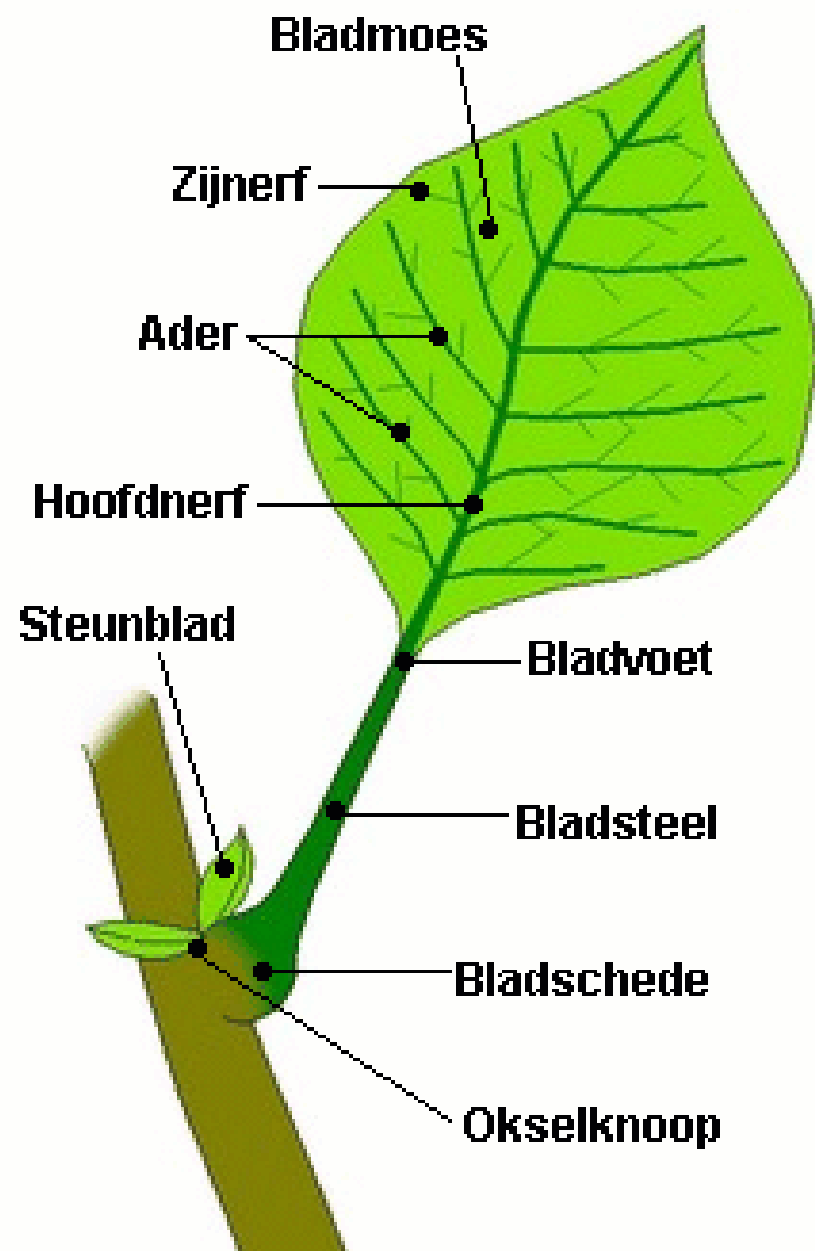


dubbel
geveerd

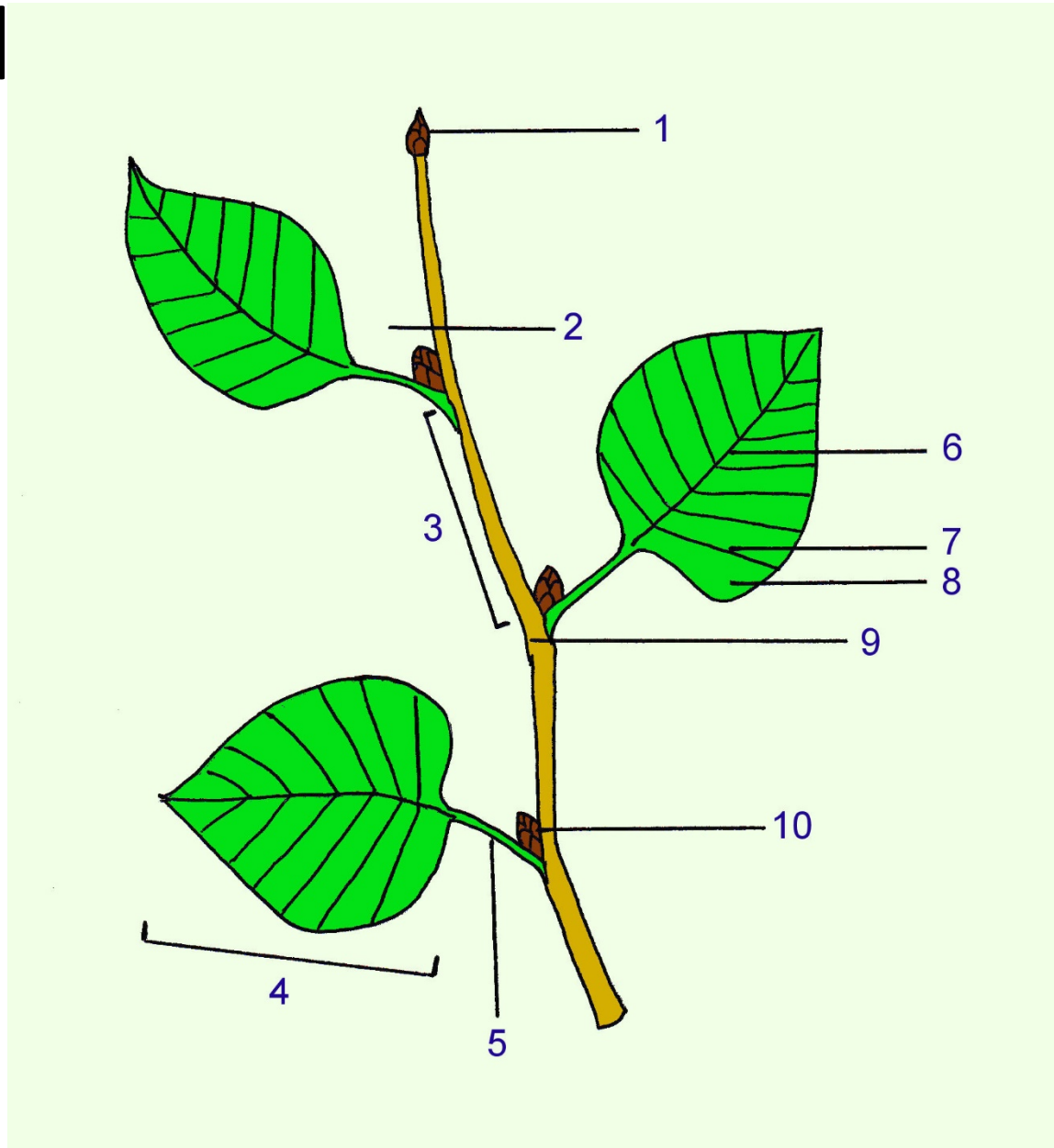


kamvormig

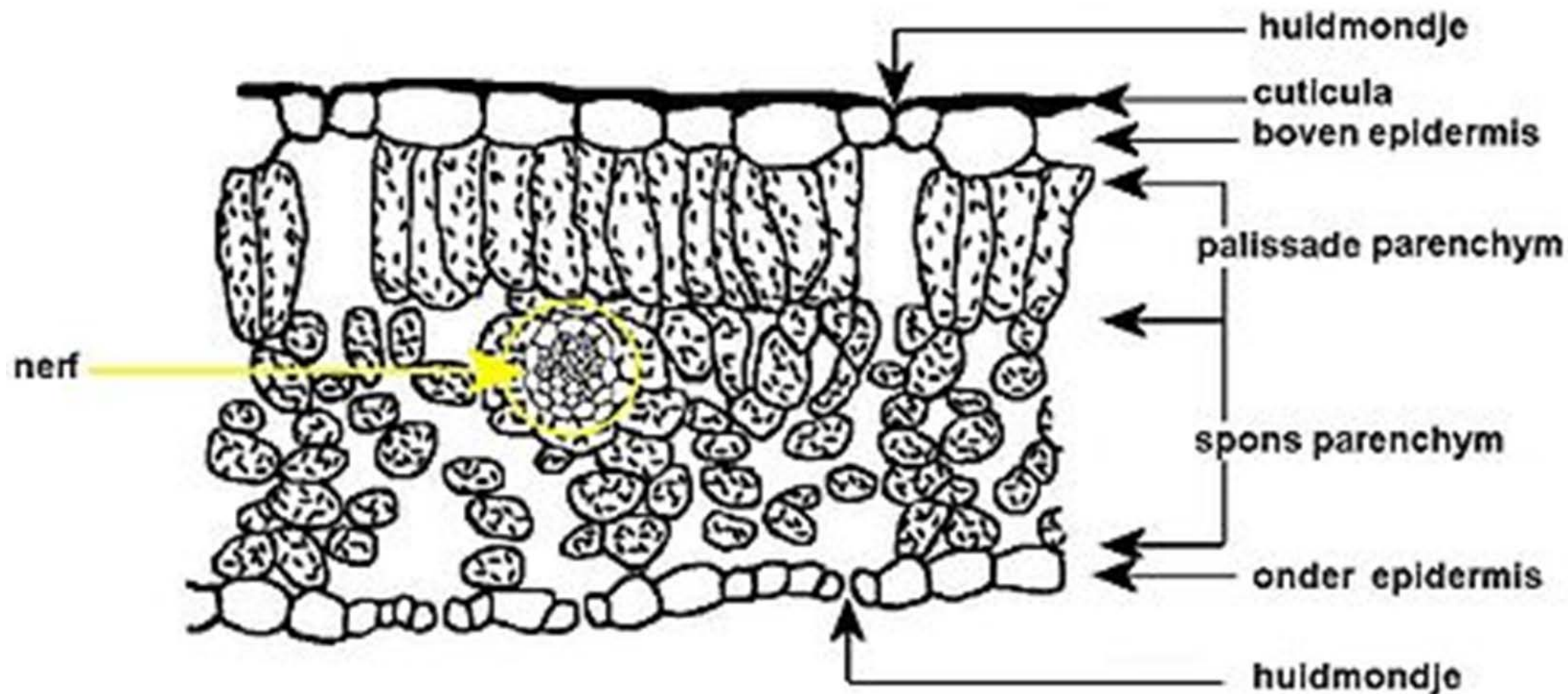
Het blad



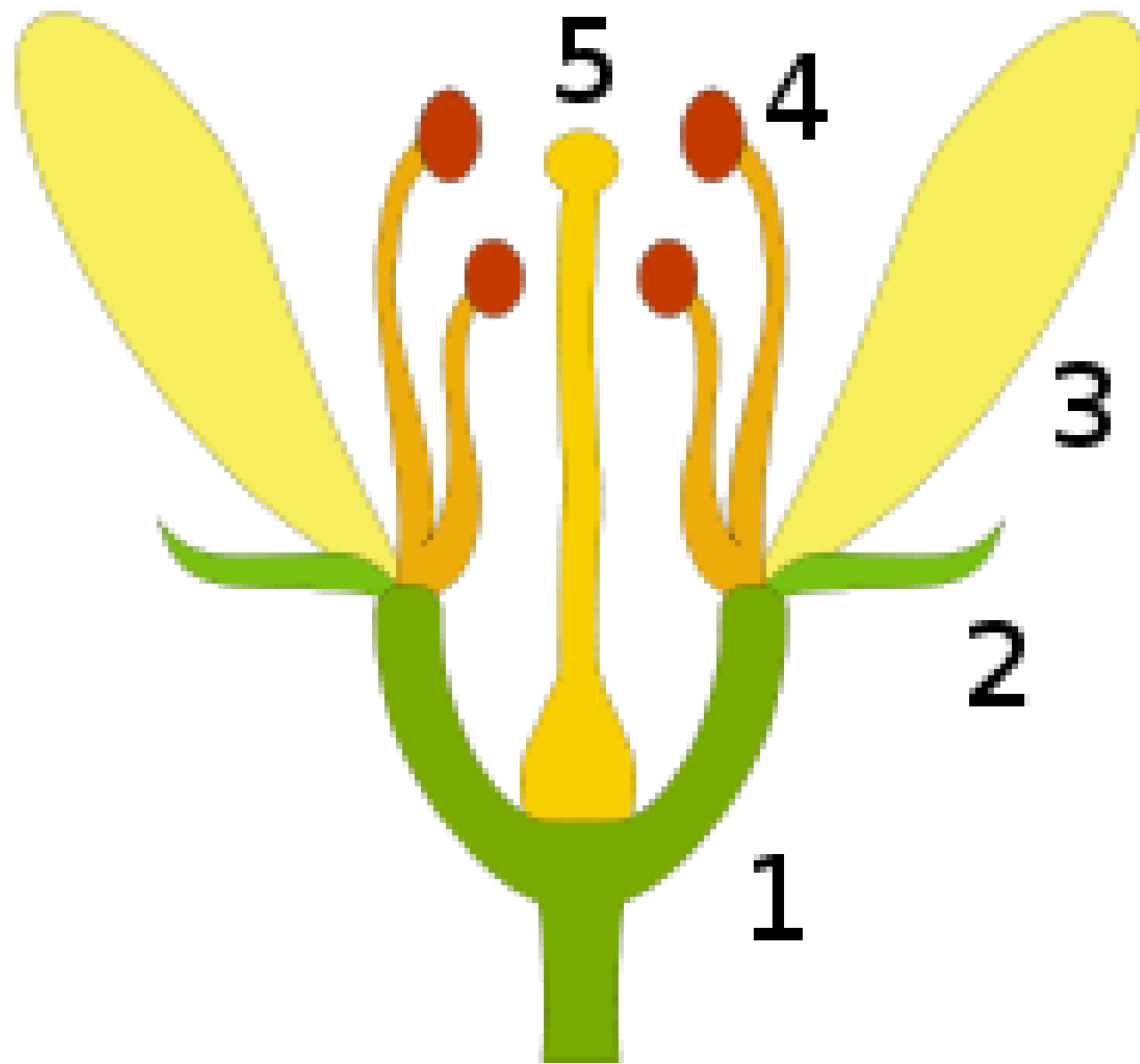
De stengel

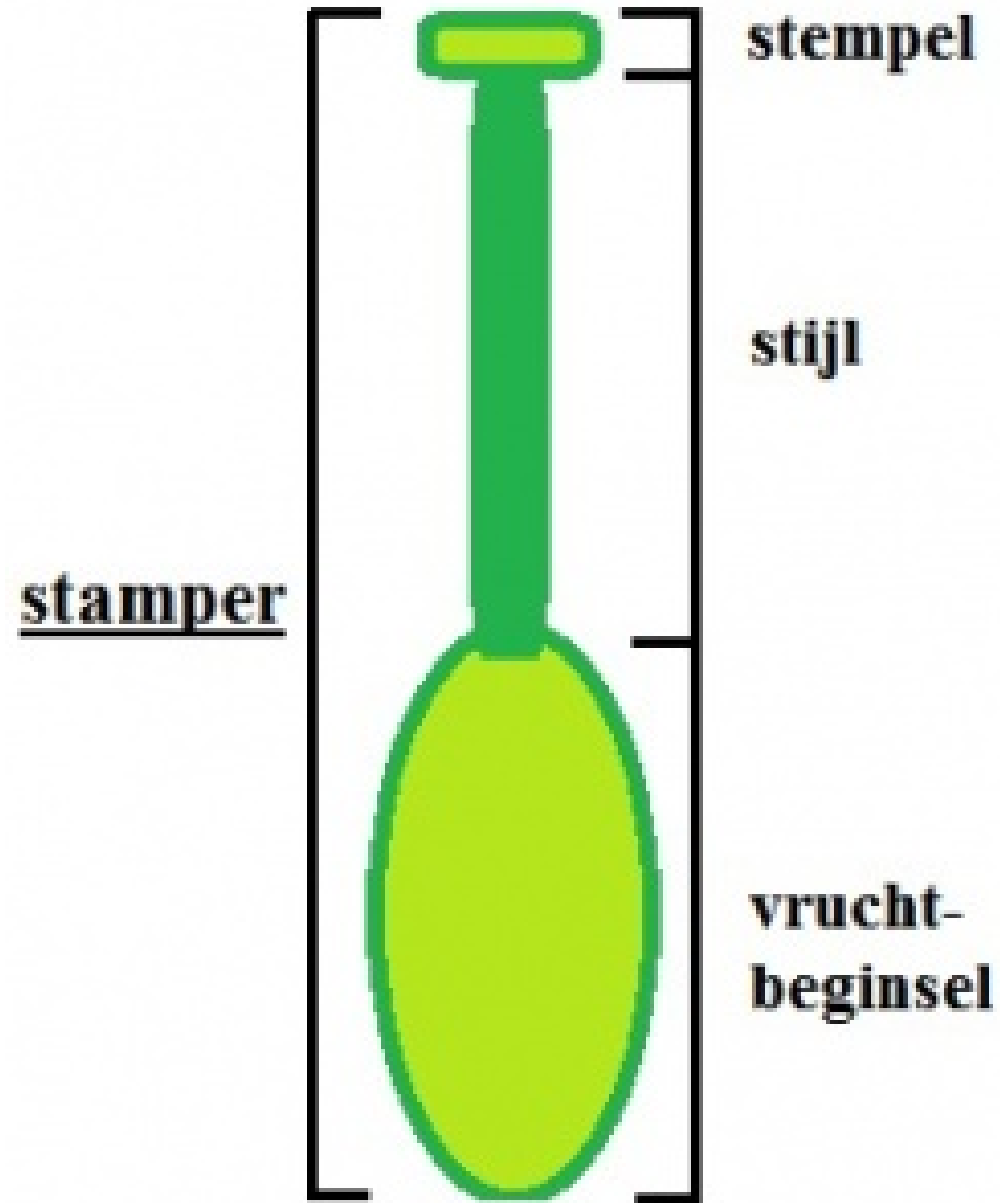


Doorsnede bladschijf

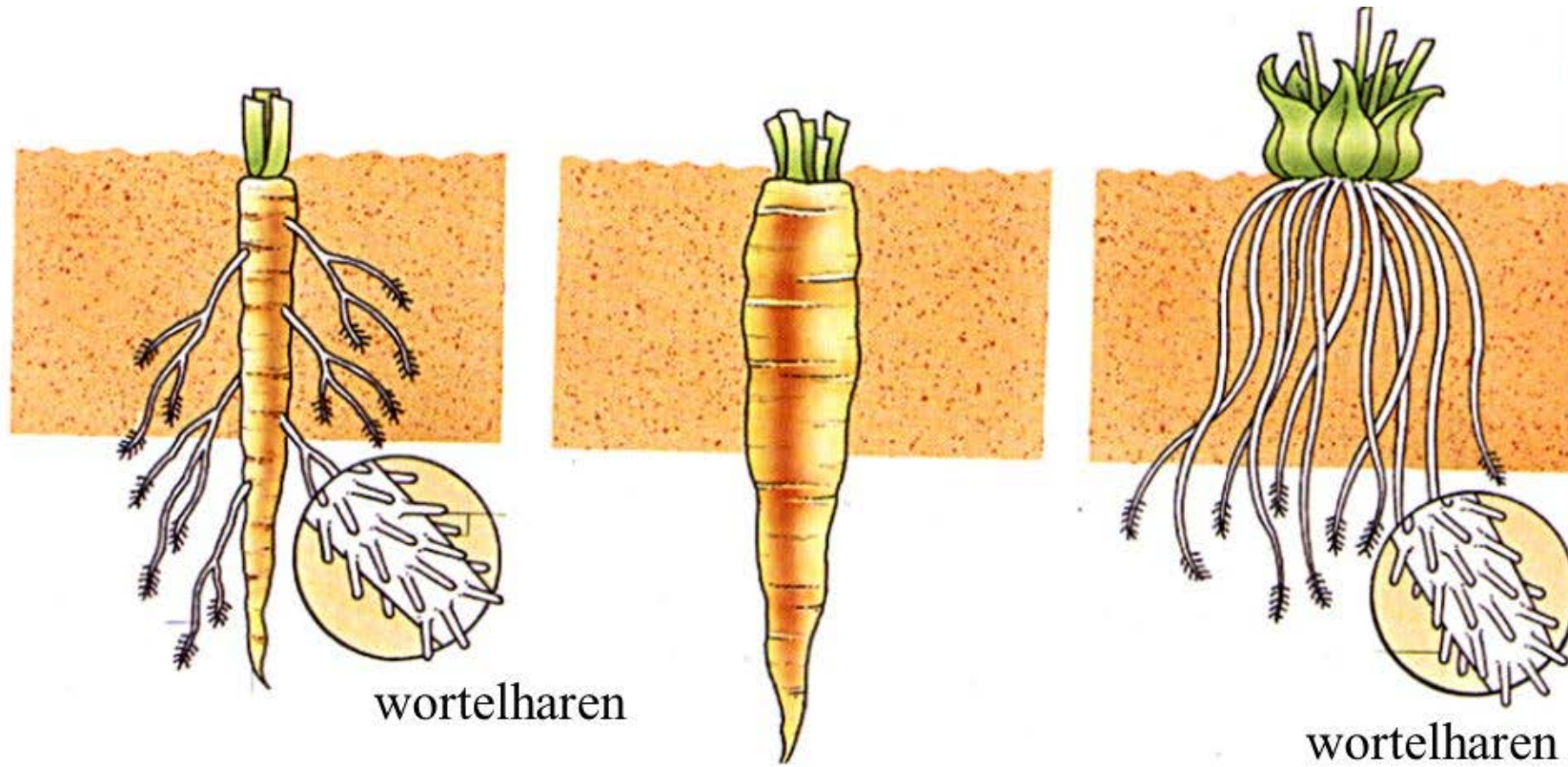


De bloem





De wortel

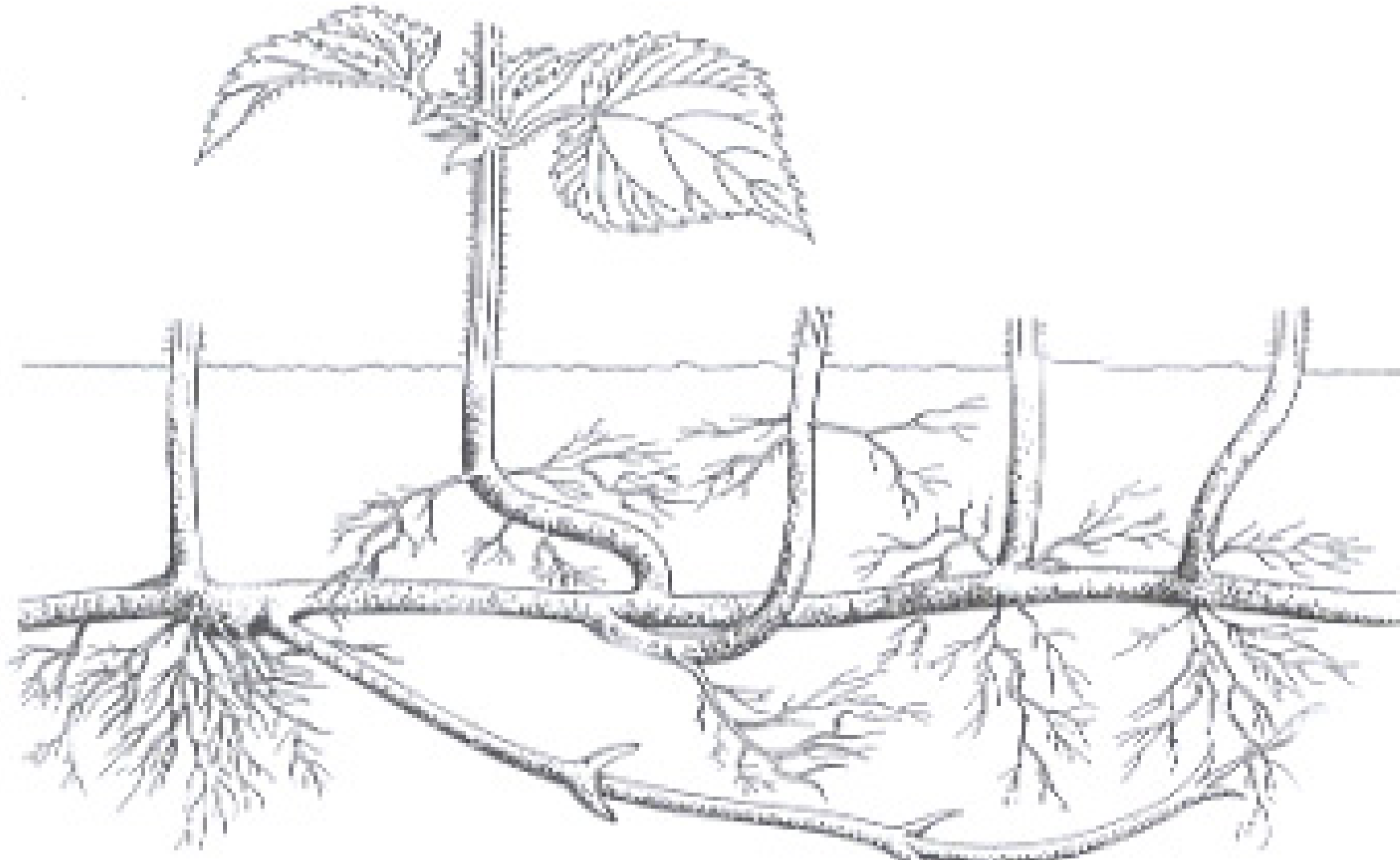


Hoofdwortel
met zijwortels

penwortel

bijwortels

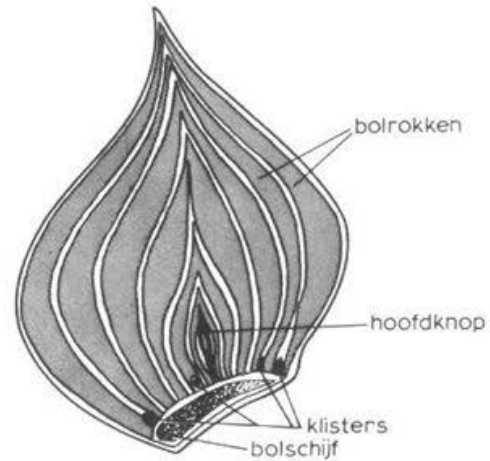
Wortelstok



De bol

MORFOLOGIE

gerokte bollen



Tulipa (leliebloemig)

De knol

MORFOLOGIE: Knol

